



# MONTHLY REPORT

<b>To:</b>	<b>Mayor Strathdee and Members of Council</b>
<b>From:</b>	<b>Community Services</b>
<b>Date of Meeting:</b>	<b>25 April 2017</b>
<b>Subject:</b>	<b>DCS 10-2017 April Monthly Report (Community Services)</b>

## RECOMMENDATION

THAT DCS 10-2017 April Monthly Report (Community Services) be received as information.

## DEPARTMENTAL HIGHLIGHTS

### Aquatics

- We had 4780 swimmers through the pool in the month of March. During March Break we had 5 public swims, two were sponsored, we had 696 swimmers through.
- 293 swimmers registered for spring group swimming lessons, 20 private lessons with numbers growing, they begin April 22.
- Held lifeguard staff training on Sunday March 28, focus was on emergency procedures with mock situations.

### Community Services

- Received the draft 'Planning Context Report' from the Recreation Master Plan Consultants. Next steps: continue to collect statistical data (ex: attendance, current programs provided) and begin the formation of the report. Anticipated date to bring report to Council is at the SPC meeting on June 20<sup>th</sup>.
- Rock Rink scheduled to come out following Easter weekend, and at the end of April the Blue rink will come out.

### Child Care

- Our March Break the full day program was very successful, with a high level of enrollment. This was the 1<sup>st</sup> year that this program utilized the community pool to both the delight of the children and parents.
- The Child Care Centre staff have been working with our outdoor learning environment, with the variation in weather over the past few weeks, the children and staff have been developing plans and activities based on all the seasons. The favourite being puddle jumping thus far, for not only the children but staff as well.

### Museum

- Staff led outreach programs at McCarthy Place in Stratford on March 13, Kingsway Lodge on March 14 and Country Meadows Retirement Home on March 23. Total participants were 53.
- Staff and volunteers led a seminar on early immigration and settlement on March 16. There were 26 people in attendance. With several people on a waiting list, this seminar will be offered again in early May.

- Staff have met with organizers of the Quilt Squared project and have successfully negotiated the Museum as host for this exhibit. It will open on May 15. The Museum will also host two lectures on historic quilts on June 1.
- Volunteers logged 167 on-site hours of service in March.

#### **Recreation**

- Received \$500 from ParticipAction grant for Canada 150
- New Dodgeball Archery dates are set leading up to summer
- Running a train the trainer model for grade 5 and 6 in Little Falls
- Kicks soccer program started with full capacity

#### **Senior Services**

- There has been a steady stream of new comers through the Friendship Centre for tours of the facility
- Lots of positive feedback has been received on the programs and services available in St. Marys
- Volunteer Appreciation will be held on May 3
- Group Fitness Classes continue to grow. April 3<sup>rd</sup> saw 36 participants in the 9am fitness class and the 18 in the Men's Strength class.
- Over 50 participants have completed fitness testing
- Better Blood Sugar workshop was well attended and attracted a new demographic
- The Friendship Centre hosted a successful scrapbooking event, drawing in 73 scrap bookers from across the region. This was a fundraising program.

#### **Youth Services**

- Applied for joint grant with Culture and Economic Development Manager of \$10,000 to run a youth professional development course.
- Membership has grown since the arrival of the new Supervisor and has quadrupled to a current total of 173 members.
- All new equipment arrived from the \$4,719 Jumpstart Grant.

## **OUTSTANDING ISSUES AND PROJECT LIST**

#### **Aquatics**

- Working towards on line registration for the summer swim lessons.
- Working with the Perth District Health Unit through their Grant from the Stratford & District Leisure Activity Council pilot project for sunscreen dispensers and refills in high traffic area's in the summer. We will be receiving two dispensers and 2 refills, for the quarry and splash pad.
- May- recertification begins for the lifeguards, Standard First Aid, Water Safety Instructors and National Lifeguard.

#### **Community Services**

- Upcoming large PRC events for April include the Kinsmen 60<sup>th</sup> Anniversary, Rotary Annual Rural Event, Easter weekend NBC hockey tournament, St. Marys Kinettes Spring Auction and The St. Marys Hospital Gala.
- Drafting agreements for both the Rotary Club and Lions Club for the Cadzow project.

#### **Child Care**

- Working with Perth County on implementation of a centralized waitlist for the county. This will allow parents to place their child electronically on a wait list for their community. An email will automatically be sent to the provider and the parent. This will streamline the process for parents.

## Museum

- 12 Little Falls Public School field trips scheduled in April.
- April 20, reuse of historic train stations seminar.
- May 2, early settlers seminar.

## Recreation

- Bubble Soccer will be arranging dates to start in late May.
- Working on putting on additional 2-3 year old soccer stars program based on the current public demand.
- Planning and training staff for summer programs to start May 8<sup>th</sup>.

## Senior Services

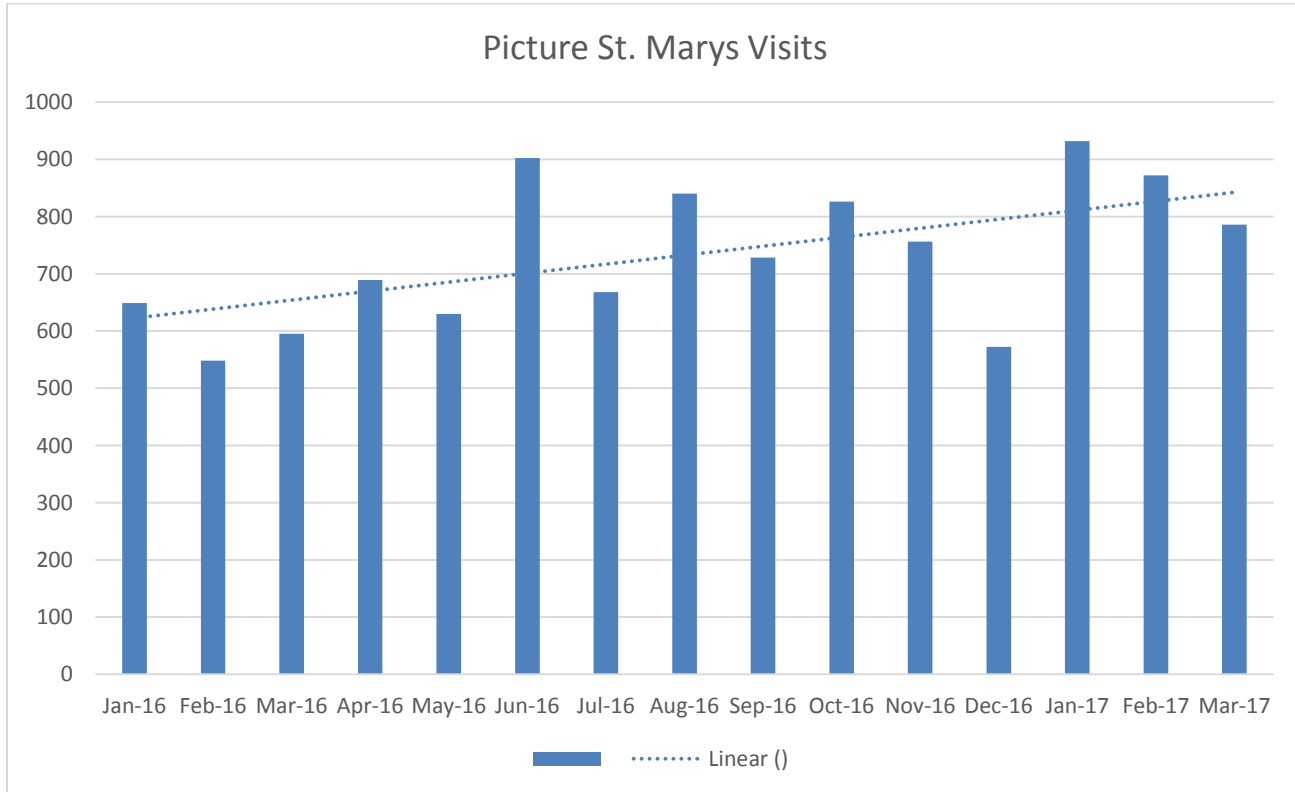
- Network & Data Sharing Agreements for the Huron/Perth Care Coordination Project.
- Continued work on reviewing and updating the departmental program policies.
- Ongoing promotion and development of programs and services.
- New Horizons grant, work to be developed and implemented.

## Youth Services

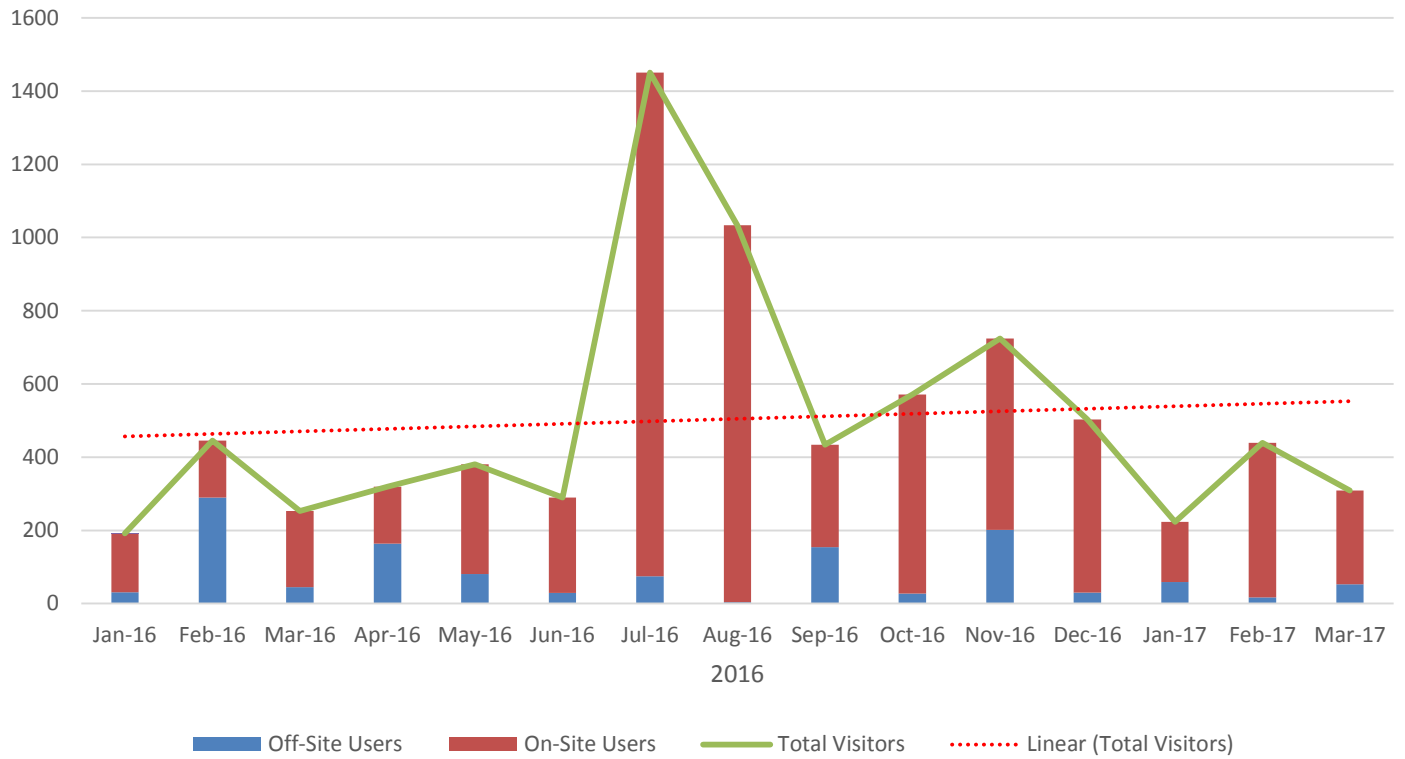
- Have been approached by Stratford Perth Community Foundation to look at running a Youth Mental Health project through a grant they would provide between \$10,000-\$15,000
- Youth Centre surveys will be given to all youth and parents to get feedback on the new model and layout
- New staff are being sent for their High 5 course

## SPENDING AND VARIANCE ANALYSIS

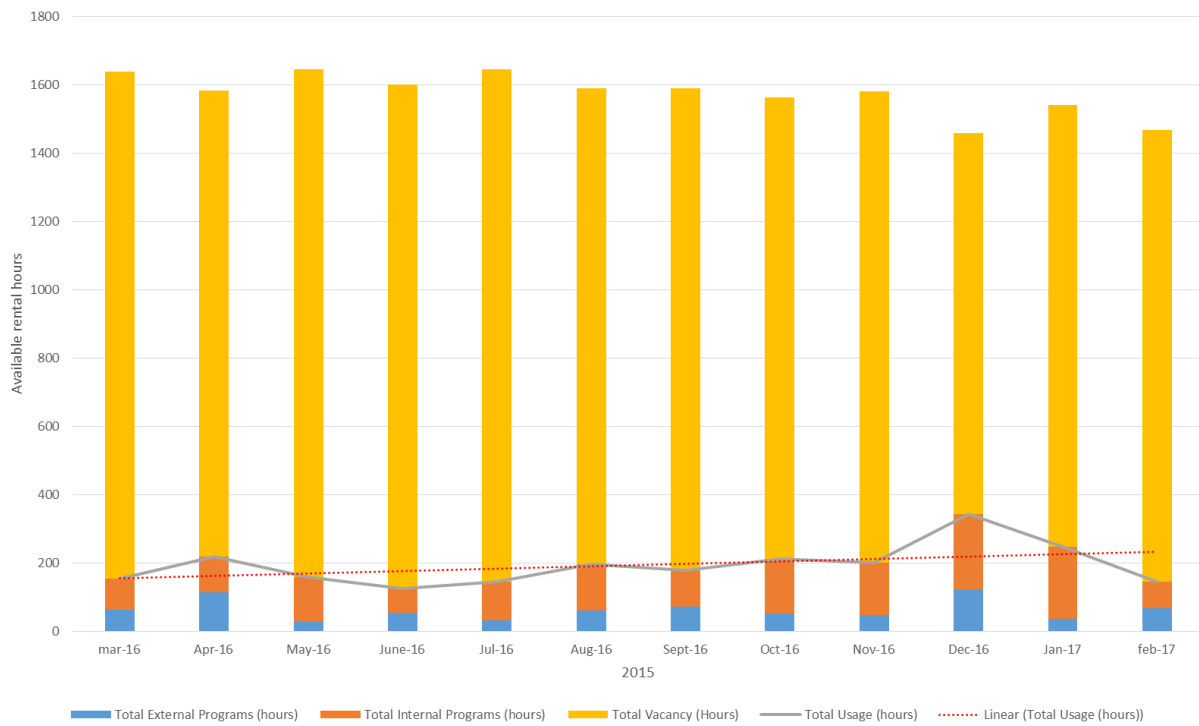
Nothing at this time.



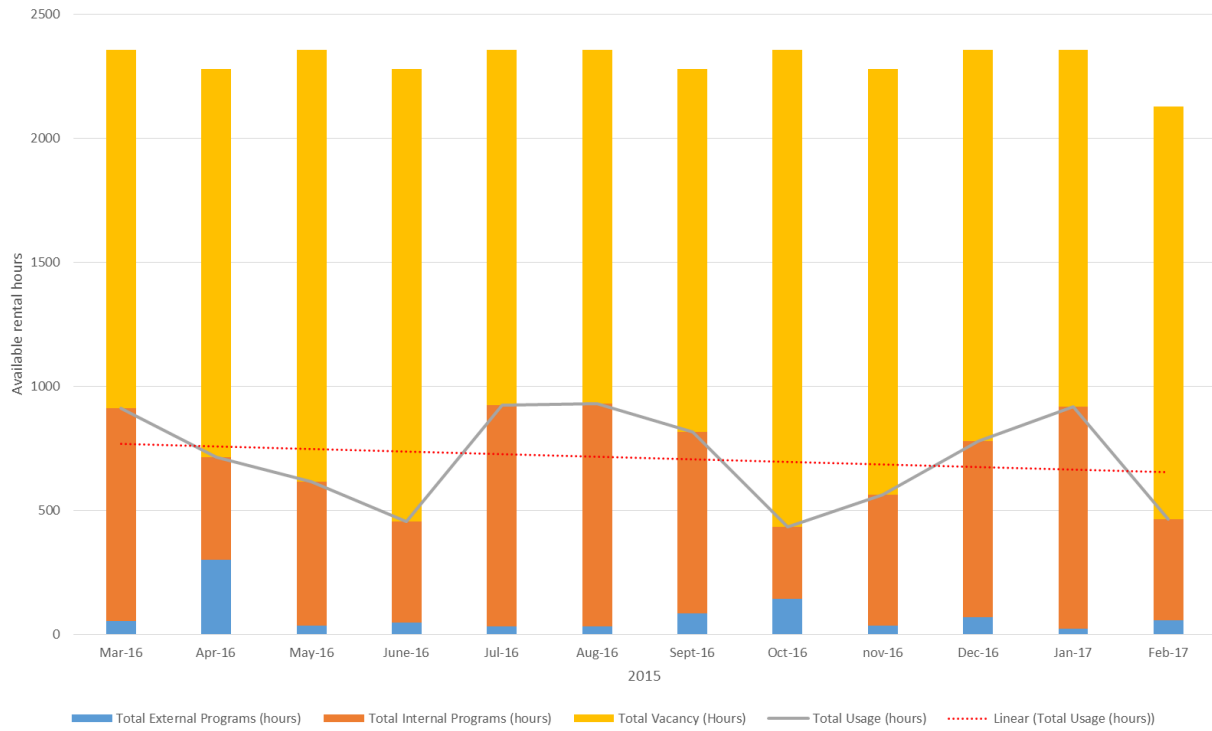
## St. Marys Museum Visitors



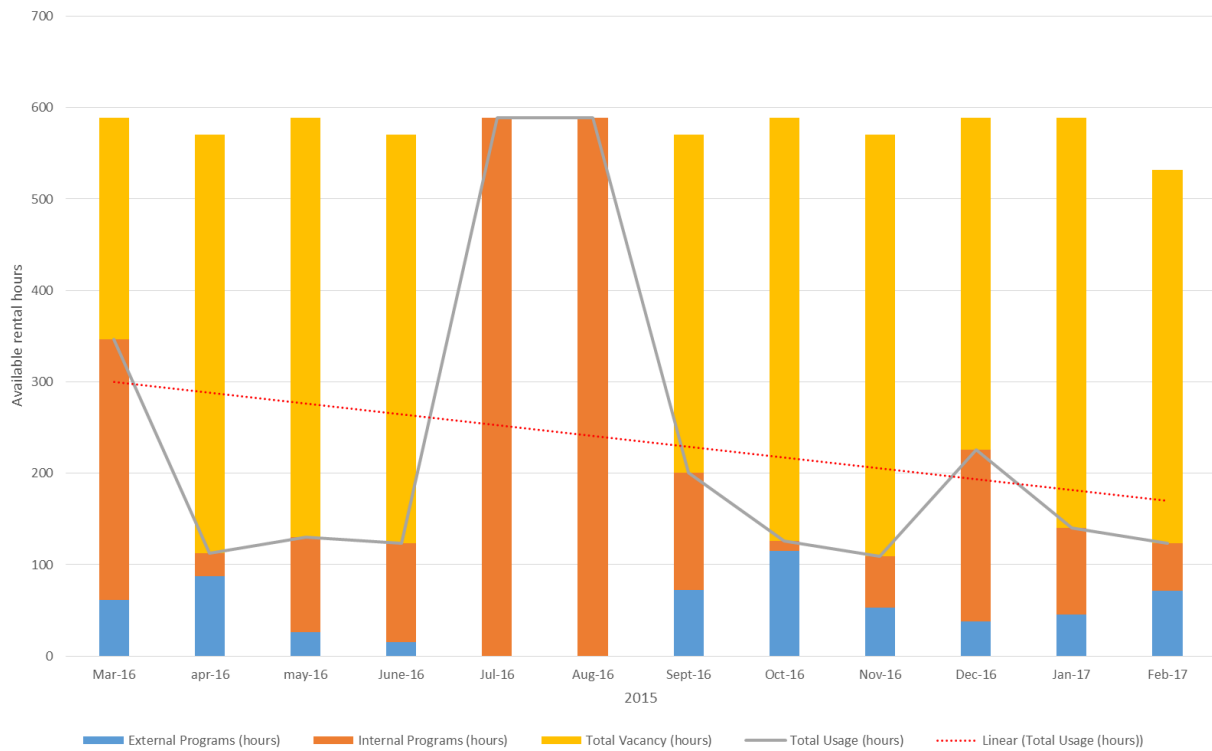
## Community Centre Total Hall Usage (Includes 1/3, 2/3, and Full hall)

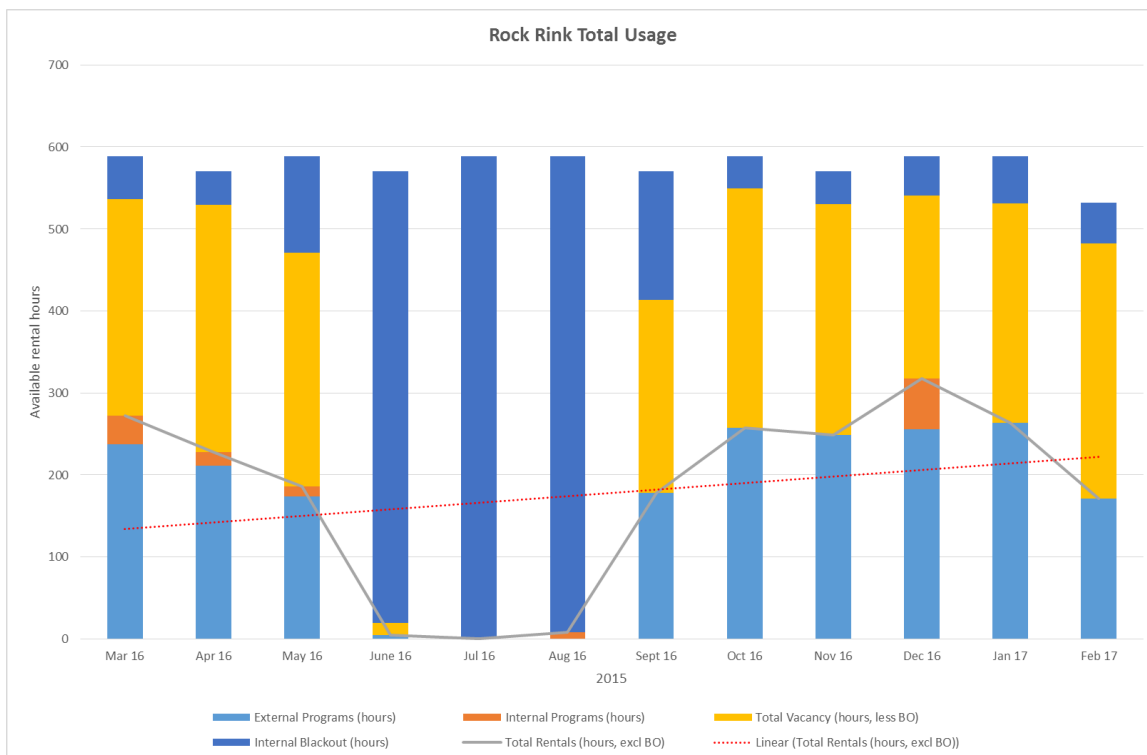
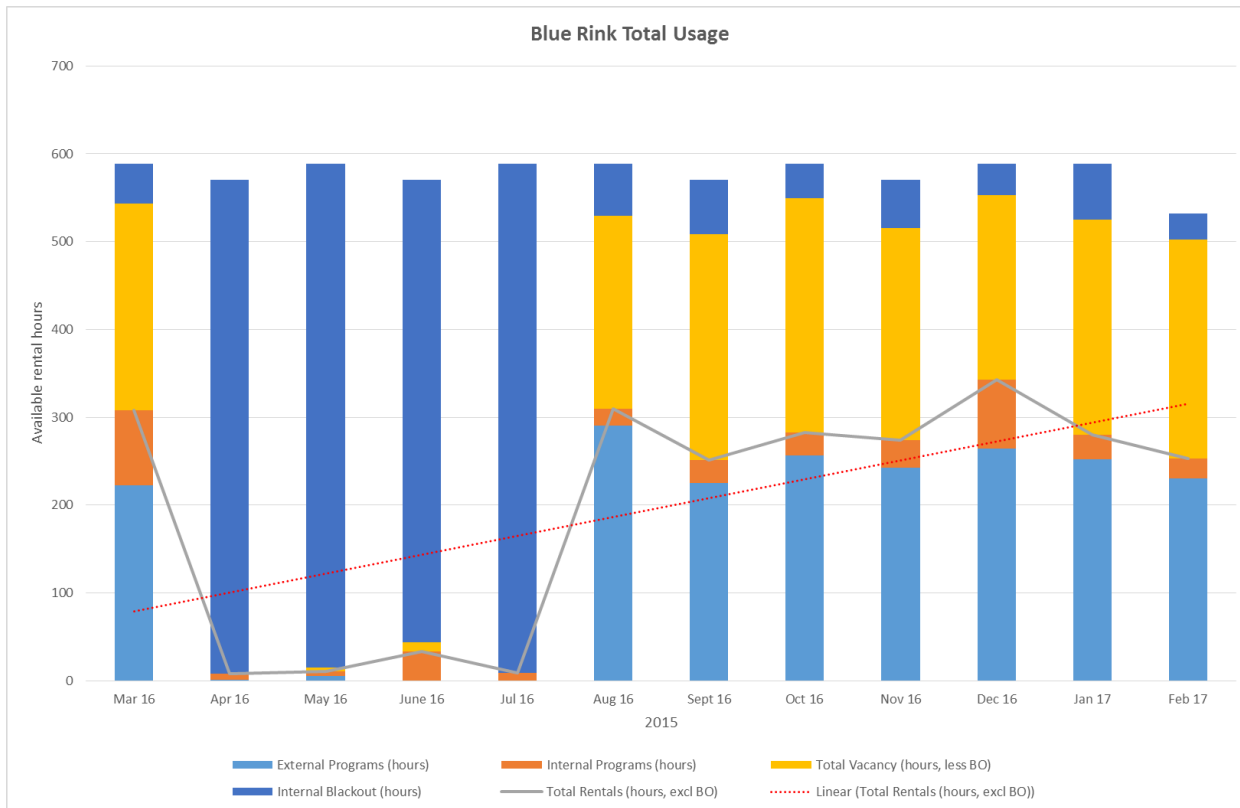


**Fiendship Centre Total Usage**  
(Multi Purpose Room, Main hall, Meeting Rooms A, B & C)

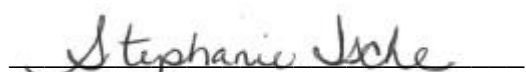


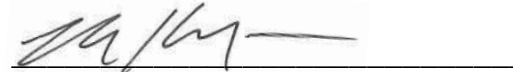
**Endzone Room Total Usage**





Respectfully submitted,

  
 Stephanie Ische  
 Director of Community Services

  
 Brent Kittmer  
 CAO / Clerk