

APPROVED UNDER SECTION 51 OF THE PLANNING ACT,  
R.S.O. 1990, c.P. 13 AS AMENDED, BY THE COUNCIL OF  
THE CORPORATION OF THE TOWN OF ST. MARYS THIS  
5<sup>TH</sup> DAY OF August, 2014.

*Steve Grose*  
MAYOR, STEVE GROSE  
*Kevin McLlain*  
C.A.O., CLERK, KEVIN MCLLAIN

WE HAVE THE AUTHORITY TO BIND THE CORPORATION

PLAN OF SUBDIVISION  
OF PART OF  
LOTS 35, 36 and 46  
REGISTERED PLAN No. 371  
AND PART OF  
TRACY STREET  
(CLOSED BY BY-LAW No. 64-2012, INSTRUMENT No. PC105534)  
REGISTERED PLAN No. 371  
AND PART OF  
LOT 21, CONCESSION 17  
(FORMERLY IN THE TOWNSHIP OF BLANSHARD)  
TOWN OF ST. MARYS  
COUNTY OF PERTH

SCALE 1:500  
N.A. GEOMATICS INC.  
ONTARIO LAND SURVEYORS

CERTIFICATE OF REGISTRATION

PLAN 44M-48

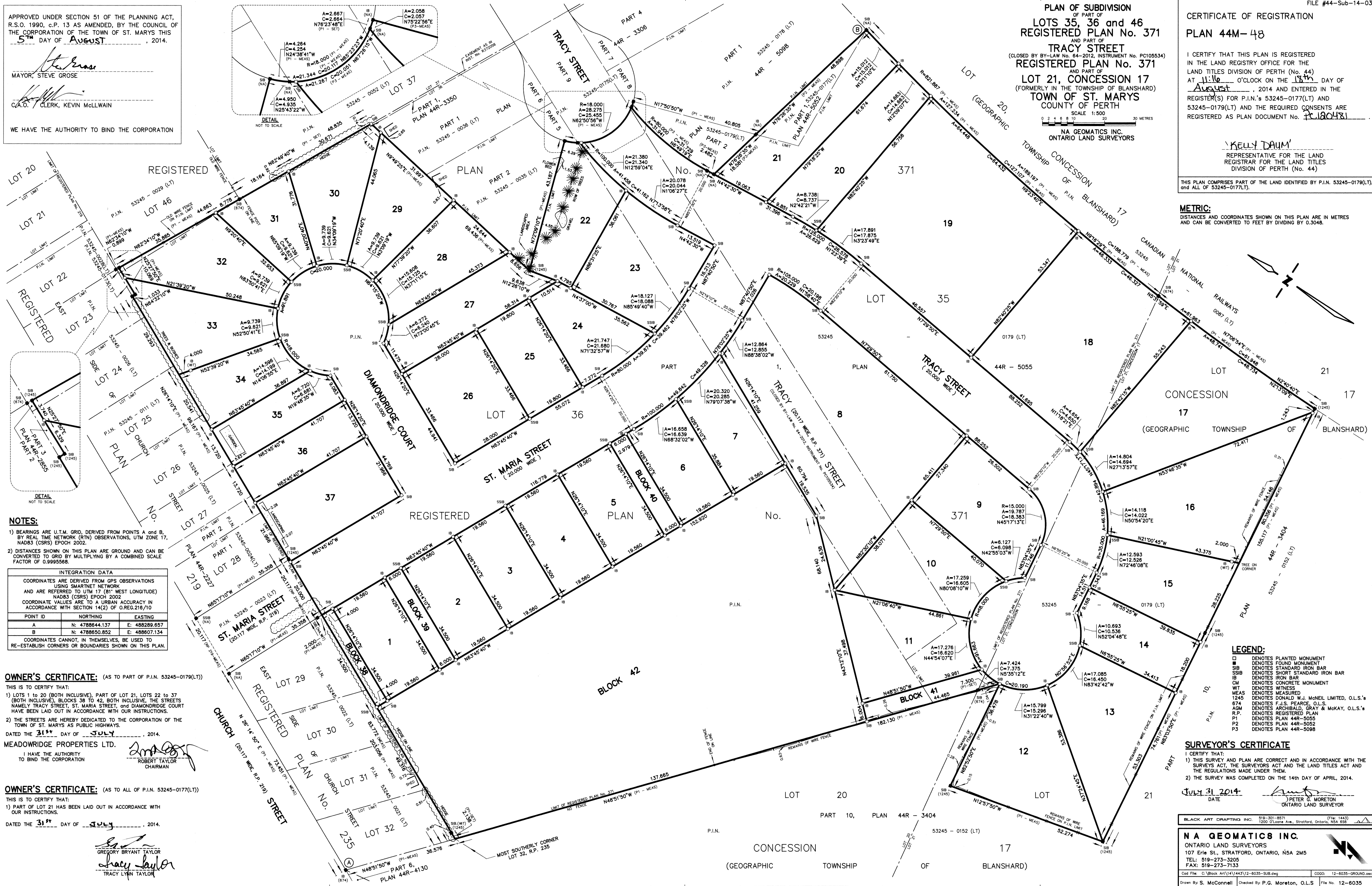
I CERTIFY THAT THIS PLAN IS REGISTERED  
IN THE LAND REGISTRY OFFICE FOR THE  
LAND TITLES DIVISION OF PERTH (No. 44)  
AT 11:10 O'CLOCK ON THE 13<sup>th</sup> DAY OF  
August, 2014 AND ENTERED IN THE  
REGISTER(S) FOR P.I.N.'s 53245-0177(LT) AND  
53245-0179(LT) AND THE REQUIRED CONSENTS ARE  
REGISTERED AS PLAN DOCUMENT No. PC180481

*Kelly Daum*  
REPRESENTATIVE FOR THE LAND  
REGISTRAR FOR THE LAND TITLES  
DIVISION OF PERTH (No. 44)

THIS PLAN COMPRISES PART OF THE LAND IDENTIFIED BY P.I.N. 53245-0179(LT),  
AND ALL OF 53245-0177(LT).

METRIC:

DISTANCES AND COORDINATES SHOWN ON THIS PLAN ARE IN METRES  
AND CAN BE CONVERTED TO FEET BY DIVIDING BY 0.3048.



NOTES:

- 1) BEARINGS ARE U.T.M. GRID, DERIVED FROM POINTS A and B, BY REAL TIME NETWORK (RTN) OBSERVATIONS, UTM ZONE 17, NAD83 (CSRS) EPOCH 2002.
- 2) DISTANCES SHOWN ON THIS PLAN ARE GROUND AND CAN BE CONVERTED TO GRID BY MULTIPLYING BY A COMBINED SCALE FACTOR OF 0.9995568.

INTEGRATION DATA		
COORDINATES ARE DERIVED FROM GPS OBSERVATIONS USING SMARTNET NETWORK AND ARE REFERRED TO UTM 17 (81° WEST LONGITUDE) NAD83 (CSRS) EPOCH 2002. COORDINATE VALUES ARE TO A URBAN ACCURACY IN ACCORDANCE WITH SECTION 14(2) OF O.R.G.216/10		
POINT ID	NORTHING	EASTING
A	N: 4788644.137	E: 488289.657
B	N: 4788650.852	E: 488607.134

COORDINATES CANNOT, IN THEMSELVES, BE USED TO RE-ESTABLISH CORNERS OR BOUNDARIES SHOWN ON THIS PLAN.

OWNER'S CERTIFICATE: (AS TO PART OF P.I.N. 53245-0179(LT))

THIS IS TO CERTIFY THAT:  
1) LOTS 1 to 20 (BOTH INCLUSIVE), PART OF LOT 21, LOTS 22 to 37 (BOTH INCLUSIVE), BLOCKS 38 to 42, BOTH INCLUSIVE, THE STREETS NAMED TRACY STREET, ST. MARIA STREET, and DIAMONDRIIDGE COURT HAVE BEEN LAID OUT IN ACCORDANCE WITH OUR INSTRUCTIONS.

2) THE STREETS ARE HEREBY DEDICATED TO THE CORPORATION OF THE TOWN OF ST. MARYS AS PUBLIC HIGHWAYS.

DATED THE 31<sup>st</sup> DAY OF JULY, 2014.

MEADOWRIDGE PROPERTIES LTD.

I HAVE THE AUTHORITY TO BIND THE CORPORATION  
*Robert Taylor*  
CHAIRMAN

OWNER'S CERTIFICATE: (AS TO ALL OF P.I.N. 53245-0177(LT))

THIS IS TO CERTIFY THAT:  
1) PART OF LOT 21 HAS BEEN LAID OUT IN ACCORDANCE WITH OUR INSTRUCTIONS.

DATED THE 31<sup>st</sup> DAY OF JULY, 2014.

*Gregory Bryant Taylor*  
GREGORY BRYANT TAYLOR  
*Tracy Lynn Taylor*  
TRACY LYNN TAYLOR

LEGEND:

- DENOTES PLANTED MONUMENT
- DENOTES FOUND MONUMENT
- SB DENOTES STANDARD IRON BAR
- SSB DENOTES SHORT STANDARD IRON BAR
- IB DENOTES IRON BAR
- CM DENOTES CONCRETE MONUMENT
- WT DENOTES WITNESS
- MEAS DENOTES MEASURED
- 1245 DENOTES DONALD W.J. MCNEIL LIMITED, O.L.S.'s
- 674 DENOTES J.S. PEARCE, O.L.S.
- AGM DENOTES ARCHIBALD, GRAY & MCKAY, O.L.S.'s
- R.P. DENOTES REGISTERED PLAN
- P1 DENOTES PLAN 44R-5055
- P2 DENOTES PLAN 44R-5052
- P3 DENOTES PLAN 44R-5098

SURVEYOR'S CERTIFICATE

I CERTIFY THAT:  
1) THIS SURVEY AND PLAN ARE CORRECT AND IN ACCORDANCE WITH THE SURVEYORS ACT, THE SURVEYORS ACT AND THE LAND TITLES ACT AND THE REGULATIONS MADE UNDER THEM.  
2) THE SURVEY WAS COMPLETED ON THE 14<sup>TH</sup> DAY OF APRIL, 2014.

July 31, 2014  
DATE  
*Peter G. Moreton*  
PETER G. MORETON  
ONTARIO LAND SURVEYOR

BLACK ART DRAFTING INC. 519-307-8571 (File: 1443)  
1200 O'Leary Ave., Stratford, Ontario, N5A 6S6

N.A. GEOMATICS INC.  
ONTARIO LAND SURVEYORS  
107 Erie St., STRATFORD, ONTARIO, N5A 2M5  
TEL: 519-273-3205  
FAX: 519-273-7133

Cad File: C:\Block Art\14\1443\12-6035-SUB.dwg C000: 12-6035-GROUND.doc  
Drawn By: S. McCannell Checked By: P.G. Moreton, O.L.S. File No. 12-6035