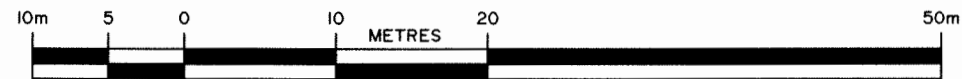


SCHEDULE "A" DRAWING 4

TOPOGRAPHICAL PLAN OF SURVEY
of all of
LOTS 1 to 10, and LOTS 13 to 19, BLOCK "F"
and part of
LOTS 11 & 12, BLOCK "F"
and all of
LOTS 1 to 13, and LOTS 16 to 21, BLOCK "E"
and part of
LOTS 14 & 15, BLOCK "E"
and all of
MARKHAM STREET
(AS CLOSED BY BY-LAW N° 825, INST N° STM20106)
REGISTERED PLAN N° 216
in the
TOWN OF ST. MARY'S
COUNTY OF PERTH
Scale 1 : 500
DAVID BIANCHI, O.L.S.



METRIC: DISTANCES SHOWN ON THIS PLAN ARE IN METRES AND CAN BE
CONVERTED TO FEET BY DIVIDING BY 0.3048

NOTES

- SIB DENOTES STANDARD IRON BAR.
IB IRON BAR.
IB# ROUND IRON BAR.
C/C CUT CROSS.
WT WITNESS.
(SU) SOURCE UNKNOWN.
(HR) HOLSTEAD & REDMOND LIMITED, O.L.S.'s.
MONUMENT FOUND.
MONUMENT SET.
OU OVERHEAD UTILITY CABLE.
UP UTILITY POLE.
GW GUY WIRE.
WV WATER VALVE.
FH FIRE HYDRANT.
CONC CONCRETE.
CSW CONCRETE SIDEWALK.
MH MANHOLE.
CB CATCH BASIN.
BM BENCHMARK.
FF FINISHED FLOOR ELEVATION.
SHR SHRUB.
P1 PLAN 44R-4061.
BHC BURIED HYDRO CABLE.

ELEVATIONS ARE GEODETIC AND ARE DERIVED FROM GPS OBSERVATIONS

BURIED SERVICES HAVE BEEN LOCATED AS MARKED ON THE GROUND AND
MUST BE CONFIRMED BEFORE EXCAVATION.

BEARINGS ARE UTM GRID IN NAD83 (ORIGINAL) DERIVED FROM G.P.S.
OBSERVATIONS AND THE CAN-NET BASE STATION NETWORK AND ARE
REFERRED TO THE CENTRAL MERIDIAN 81°00' WEST LONGITUDE, ZONE 17

UTM ZONE 17, NAD83 (ORIGINAL) GRID COORDINATES TO URBAN ACCURACY
PER SEC. 14 (2) OF O.REG. 216/10

POINT ID	NORTHING	EASTING
UTM 1	4789694.830	487603.746
UTM 2	4789716.689	487756.367

DISTANCES SHOWN ON THIS PLAN ARE GROUND LEVEL DISTANCES AND
CAN BE CONVERTED TO GRID DISTANCES BY MULTIPLYING BY A COMBINED
SCALE FACTOR OF 0.9995584

SURVEYOR'S CERTIFICATE

- I CERTIFY THAT:
(1) THIS SURVEY AND PLAN ARE CORRECT AND IN ACCORDANCE WITH THE
SURVEYS ACT, THE SURVEYORS ACT AND THE LAND TITLES ACT AND
THE REGULATIONS MADE UNDER THEM.
(2) THE SURVEY WAS COMPLETED ON THE 18th DAY OF MAY, 2016

JUNE 1, 2016
LONDON, ONTARIO.

David Bianchi
DAVID BIANCHI
ONTARIO LAND SURVEYOR

© HOLSTEAD & REDMOND LTD. 2016

NO PERSON MAY COPY, REPRODUCE, DISTRIBUTE OR ALTER
THIS PLAN IN WHOLE OR IN PART WITHOUT THE WRITTEN
PERMISSION OF HOLSTEAD & REDMOND LTD.



Holstead &
Redmond
Limited
ONTARIO LAND SURVEYORS

649 COLBORNE STREET
London, Ontario
N6A 3Z2
phone 519-672-4551
toll free 1-800-265-4945

SURVEYED BY	CHECKED BY	FILE N°
NR	DB	01-0036 F
FS	16/06/01	

